

# GRAHAM MOUNTAIN POWERLINE BASE

252-42

"COMPASS" barometer with Kent Odie Parner (canine) 10/31/15

site	p	Ap	Δe	e calc	e map	time	R <sub>1</sub>
(A) 2810	30.24	0.00	<b>R<sub>1</sub>=0.872</b>		1500'	10:15AM	$\frac{2320'-1500'-820'}{30.24''-29.30''-0.94''} = 0.872$
(B) Seager Trailhead	29.71	0.53	462	1962	1970'		
(C) end Hiram Todd Rd.	29.64	0.60	523	2023	2040'	10:50±	
(D) fork	29.46	0.78	680	2180		11:30	
(E) pond & farm	29.30	0.94	820	2320 ✓	2320'		
(F) 1st stump	29.12	1.12	977	2477			
(G) head of cove	28.96	1.28	1116	2616		1:00	<b>0.872</b>
(H) more stumps	28.86	1.38	1203	2703		1:30	
(I) {end hike, 1° ca-50' above }	28.79	1.45	1264	2764	<b>ept 685</b>	1:45	<b>0.872</b>
(J) {ca-50' above }		1.31	1248	2748			
(K) head of cove	28.95	1.15	1096	2596		2:10	<b>0.872</b>
(L) pond & farm	29.24	0.86	820	2320 ✓	2320'	2:40 to 2:55	
(M) Seager Trailhead	29.60	0.50	477	1977	1970'	3:30	$\frac{2320'-1500'}{30.10''-29.24''} = 0.86'' = 0.953$
(N) 2810	30.10	0.00	—	—	1500'	4:15	

## Vegetation

DAKS are still present, but scattered, at Dry Hollow confluence with red lvs on seedlings.

E White Pine upstream on Dry Brook to about 1/3 mile before Haynes Hollow.

Above (D): 3 Lycos: obtruncum, complanatum & a large popln. of annotinum

(E) Old pastures: Solid rug + gram, Aster umbel, Spiraea lat, RS, Bracken. 2 apple trees, CRAT, 2-28" SUBS prob for tapping, 1 PB,

The bridge across the vll below dam & 2 other bridges above it were built

by placing 4 large timbers parallel. Now rotted unsafe to cross.

(F) Oddly, no stumps seen until (F) & only widely-scatt. above. Largest trees ca. 16" x 100y. Looks like nil cutting since the farm days except higher up along powerline

(F) Few ASH, 1st stump has a 4" dbh broken YB growing out of it, about 25y old. Sub dom, max ± 16".

(G) Head of Cove. 2 stumps visible, both collected. SUBS suddenly to 28". YB STUMPS ASH + BASS + TIAR + PA below + CAULD (continued on p. 252-43)

$$\frac{2320'-1500'}{30.10''-29.24''} = 0.86'' = 0.953$$

Geum macrophyllum seen where, but not recorded. At aban. farm?

252-43

"ANSCO" BAROMETER

site	$\Delta p$	$\Delta p$	$\Delta p$	e calc	e map	R3
(A) 30.20	0.00	0	—	(R3=0.9111)	1500	(A) (E)
(B) 29.70	0.50	456	456	1956	1970	(A) (E)
(C) 29.65	0.55		501	2001		
(D) 29.46	0.74		674	2174		
(E) 29.30	0.90		820	2320 ✓	2320	
(F) 29.17	1.03		938	2438		
(G) 29.03	1.17		1066	2566		
(H) 28.96	1.24		1130	2630		
(I) 28.85	1.35		1230	2730		
(G) 28.95	1.08		984	2484		
(E) 29.20	0.83		820	2320 ✓	2320	(A) (E)
(B) 29.58	0.45		445	1945	1970	
(A) 30.03	0.00	0	0		1500	

$$R_3 = \frac{2320' - 1500'}{30.20' - 29.30'} = \frac{820'}{0.90'} = 0.9111$$

$$R_4 = \frac{2320' - 1500'}{30.03' - 29.20'} = \frac{820'}{0.83'} = 0.9188$$

e-p#685

(R4=0.988)

(I) e-p#685 calc-mean =  $\frac{2764 + 2748 + 2730 + 2666}{4} = \frac{10908}{4} = 2727 \text{ ft.}$

but e-p is about 50 ft higher where Dry Hollow Brook becomes precipitously steep, at ca. 2775 ft.

Vegetation, continued

Above (G) SAMB, VA, HYLOCOMIUM on bouldery, steep sub-EB slope.

HEM dom on crest of spur across above Dry Hollow stop above (I).

2 plants P. Braunii betw. power-line + Dry H. Brook at (I)

Farm not yet shown on 1875 Beer's Atlas, but road + bldg. shown on 1903-1904 Millie Quad. Farm may have been aban. 1930s? Dam + pond, plus stumps may be associated with powerline 1960s to educational TV tower on summit? 1945 Quad. shows open fields, but no road or buildings.

The powerline straight distance from Hiram Todd Rd to Graham Mtn. is S20°W true = S33°W magnetic, but it actually curves, beginning heading almost due South & later gently curving to SW higher up.

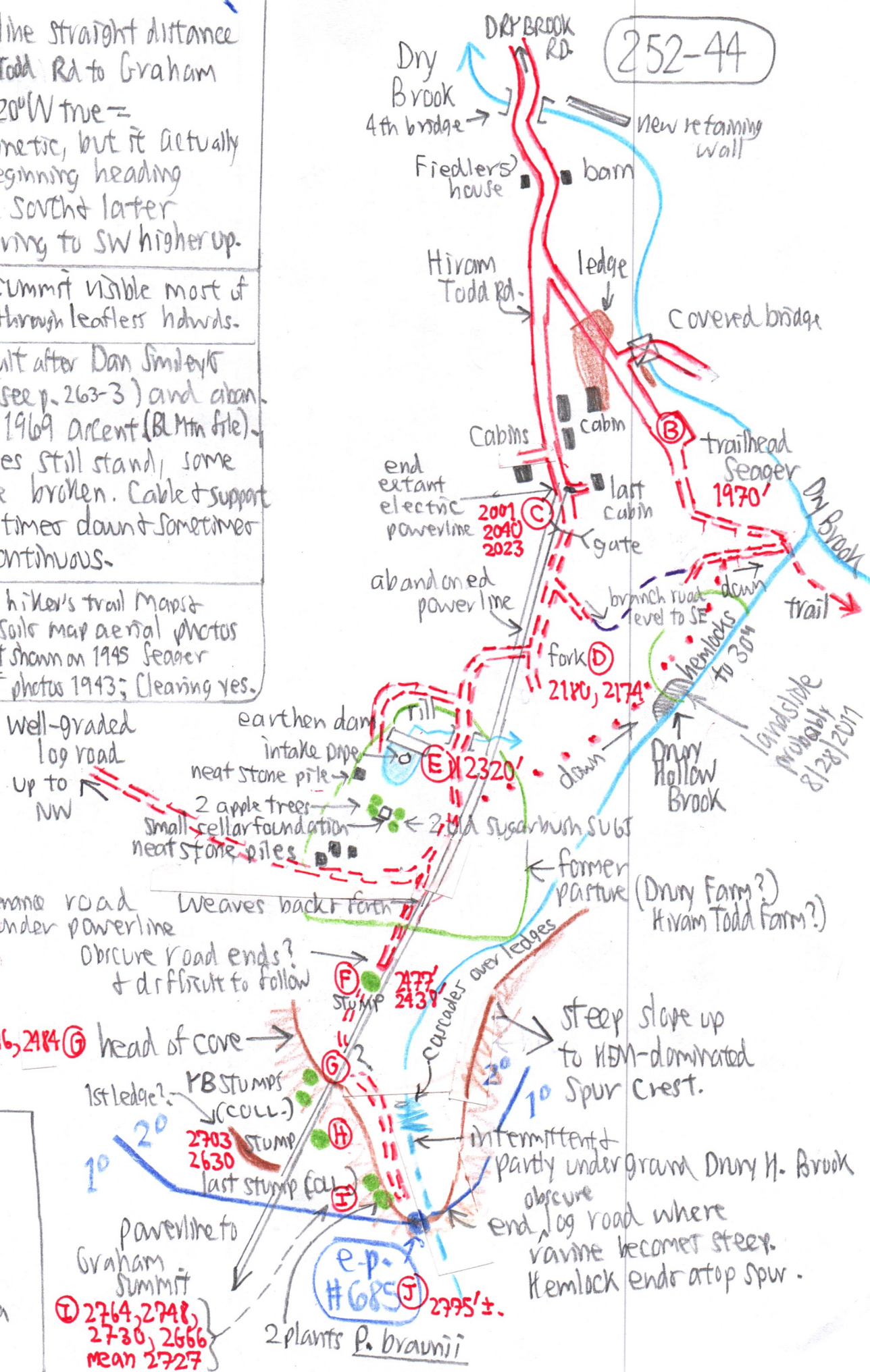
Graham Mt. summit visible most of the way up through leafless hwdws.

Powerline built after Dan Smiley's 5/22 1960 ascent (see p. 263-3) and aban. before MK's 1969 ascent (BLMtn file).

Some poles still stand, some down, some broken. Cable & support wire sometimes down & sometimes up, but continuous.

Pond is shown on hiker's trail maps & 1979 Ulster Co. soils map aerial photos p. 24. Pond NOT shown on 1945 Seager Quad, aerial photos 1943; Clearing yes.

252-44



Only one conglomerate boulder seen, near (H). Also red shale ledge exposed near rill nearby.

Original

252-45

Bill Friedler, on 11/12/15, says that  
2 hermits made the clearing in the 1930s  
after they lost their funds during the Depression.  
One later died & the other disappeared. They did  
not farm, but <sup>they</sup> did plant apples & pile stones.  
Another fellow later built the pond.

Lands still later sold to Furlow (maybe before  
the 1960s powerline?).

